

## Vegetation Condition Index (VCI-3 month) in Arid and Semi-arid counties as at November 28, 2016

ADMINISTRATIVE UNIT					Remarks																	
COUNTY	Sub County	VCI-3 as at 31 <sup>st</sup> Oct 2016	VCI-3 as at 14 Nov 2016	VCI-3 as at 28 <sup>st</sup> Nov 2016	Color	VCI values (3-month)	Drought Category															
						≥50	Vegetation greenness above normal															
						35 to 50	Normal vegetation greenness															
						21 to 34	Moderate vegetation deficit															
						10 to 20	Severe vegetation deficit															
						<10	Extreme vegetation deficit															
BARINGO	County	53.54	46.93	39.16			The vegetation greenness is on average for the period although slightly below normal and with worsening trend in Tiaty and Mogotio (VCI-1 month 24.84 and 19.54 respectively), which will probably determine a drought situation in the two sub-counties during the next dry season unless additional rains are received in the next weeks															
	Central	66.33	58.87	54.74																		
	Eldama	61.98	55.9	46.73																		
	Mogotio	51.75	44.91	34.22																		
	North	58.1	50.82	42.82																		
	South	54.75	49.11	42.34																		
	Tiaty	48.12	41.46	33.96																		
MANDERA	County	47.82	36.57	25.16			The rainy season is so far unsatisfactory with depressed rainfall and poor distribution. As a result, M. West is now in the severe vegetation deficit category while all the other sub-counties, except M. South, are in the moderate deficit band but with marked worsening trends as shown by the extremely low values of the VCI-1 month. This situation will lead to a significant drought stress in the course of next dry season unless significant rainfall is received before the end of the short rainy season															
	Banissa	42.16	33.75	23.87																		
	M East	44	33.77	22.78																		
	Lafey	45.93	35.47	23.02																		
	M North	41.84	32.25	21.11																		
	M South	69.88	52.31	37.72																		
	M West	36.28	27.44	19.05																		
								<table border="1"> <thead> <tr> <th>Administrative Unit</th> <th>VCI – 1 Month</th> </tr> </thead> <tbody> <tr> <td>Mandera</td> <td>7.44</td> </tr> <tr> <td>Banissa</td> <td>8.35</td> </tr> <tr> <td>M East</td> <td>5.84</td> </tr> <tr> <td>Lafey</td> <td>4.79</td> </tr> <tr> <td>M. North</td> <td>5</td> </tr> <tr> <td>M South</td> <td>13.66</td> </tr> <tr> <td>M West</td> <td>5.4</td> </tr> </tbody> </table>	Administrative Unit	VCI – 1 Month	Mandera	7.44	Banissa	8.35	M East	5.84	Lafey	4.79	M. North	5	M South	13.66
Administrative Unit	VCI – 1 Month																					
Mandera	7.44																					
Banissa	8.35																					
M East	5.84																					
Lafey	4.79																					
M. North	5																					
M South	13.66																					
M West	5.4																					
TURKANA	County	33.67	29.56	24.47			Negative trend with two sub-counties approaching the severe vegetation deficit band. Rainfall received so far was significant only in T. West and part of T. Loima therefore a drought may unfold soon if new rains are not received															
	T Central	52.81	48.33	43.24																		
	T. East	26.1	23.99	20.86																		
	T. Loima	35.02	32.29	27.42																		
	T. North	32.95	27.87	22.04																		
	T. South	35.39	30.76	24.78																		
	T. West	30.89	26.05	20.74																		
MARSABIT	County	34.45	27.75	20.52			Very negative trend with two sub-counties entering the severe vegetation deficit band and extremely low VCI-1month indicating a huge vegetation deficit for period 31 <sup>st</sup> Oct to 28 <sup>th</sup> November. Good rains have been received in the last few days but only in the highland areas of Saku and Moyale, which should contribute to improve the VCI in December. However, unless significant rains are received in December, the next dry season may be particularly															
	Laisaimis	43.29	34.3	25.62																		
	Moyale	27.34	20.38	13.75																		
	N. Horr	30.34	25.27	18.91																		
	Saku	51.52	40.11	28.98																		

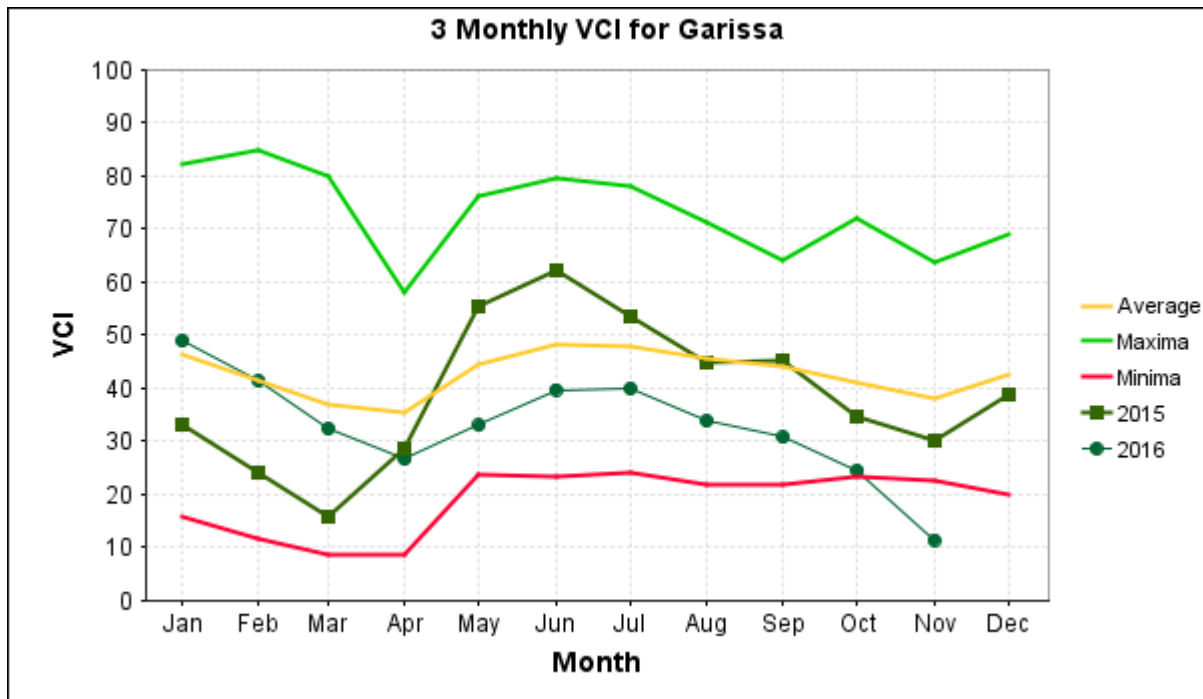
					difficult in the lowland areas																
					<table border="1"> <thead> <tr> <th>Administrative Unit</th> <th>VCI- 1 Month</th> </tr> </thead> <tbody> <tr> <td>Marsabit</td> <td>9.07</td> </tr> <tr> <td>Laisamis</td> <td>11.41</td> </tr> <tr> <td>Moyale</td> <td>1.84</td> </tr> <tr> <td>N. Horr</td> <td>9.6</td> </tr> <tr> <td>Saku</td> <td>8.76</td> </tr> </tbody> </table>	Administrative Unit	VCI- 1 Month	Marsabit	9.07	Laisamis	11.41	Moyale	1.84	N. Horr	9.6	Saku	8.76				
Administrative Unit	VCI- 1 Month																				
Marsabit	9.07																				
Laisamis	11.41																				
Moyale	1.84																				
N. Horr	9.6																				
Saku	8.76																				
ADMINISTRATIVE UNIT																					
COUNTY		VCI-3 as at 31 <sup>st</sup> Oct 2016	VCI-3 as at 14 Nov 2016	VCI-3 as at 28 <sup>st</sup> Nov 2016																	
WAJIR	County	41.32	29.29	19.08	<p>Three sub-counties are now in the severe vegetation deficit band and in general the situation is worsening as shown by the extremely low values of VCI-1month (extreme deficit in all sub-counties). Some good rains received in the last days (but not in W. South) should improve the VCI in December. However, these might not be sufficient to avoid the unfolding of a drought during the next dry season</p> <table border="1"> <thead> <tr> <th>Administrative Unit</th> <th>VCI – 1 Month</th> </tr> </thead> <tbody> <tr> <td>Wajir</td> <td>4.2</td> </tr> <tr> <td>W. East</td> <td>4.97</td> </tr> <tr> <td>W. Eldas</td> <td>5.56</td> </tr> <tr> <td>W North</td> <td>8</td> </tr> <tr> <td>W. South</td> <td>1.31</td> </tr> <tr> <td>W West</td> <td>7.29</td> </tr> </tbody> </table>	Administrative Unit	VCI – 1 Month	Wajir	4.2	W. East	4.97	W. Eldas	5.56	W North	8	W. South	1.31	W West	7.29		
	Administrative Unit	VCI – 1 Month																			
	Wajir	4.2																			
	W. East	4.97																			
	W. Eldas	5.56																			
	W North	8																			
	W. South	1.31																			
W West	7.29																				
W East	37.06	27.33	17.42																		
W.Eldas	48.06	33.92	23.11																		
W. North	49.53	37.07	26.96																		
W. South	33.95	22.91	12.98																		
W.Torbaj	54.88	40.62	27.68																		
W West	34.99	23.32	15.29																		
SAMBURU	County	29.24	23.6	17.17	<p>Also Samburu County experience a very significant vegetation deficit for the period although some rains received in November should partially improve the VCI in December.</p>																
	S East	27.5	20.83	13.37																	
	S. North	26.62	22.67	18.05																	
	S. West	45.67	38.32	29.79																	
GARISSA	County	24.37	18.25	11.31	<p>As at the end of November, Garissa County experiences the lowest vegetation greenness ever recorded for the period since the satellite Modis started to operate in 2001, with three sub-counties now in the extreme vegetation deficit band. The VCI-1 month shows that the vegetation performance in the last four week was extremely poor. Some rains received in November could slightly improve the VCI situation in December but the County will face a severe drought in the course of the next dry season unless late rains are received in December (which are quite improbable)</p> <table border="1"> <thead> <tr> <th>Administrative Unit</th> <th>VCI – 1 Month</th> </tr> </thead> <tbody> <tr> <td>Garissa</td> <td>3.39</td> </tr> <tr> <td>Balambala</td> <td>3.52</td> </tr> <tr> <td>Daadab</td> <td>0.81</td> </tr> <tr> <td>Fafi</td> <td>2.56</td> </tr> <tr> <td>Ijara</td> <td>5.96</td> </tr> <tr> <td>Lagdera</td> <td>4.86</td> </tr> <tr> <td>Dujis</td> <td>4.78</td> </tr> </tbody> </table>	Administrative Unit	VCI – 1 Month	Garissa	3.39	Balambala	3.52	Daadab	0.81	Fafi	2.56	Ijara	5.96	Lagdera	4.86	Dujis	4.78
	Administrative Unit	VCI – 1 Month																			
	Garissa	3.39																			
	Balambala	3.52																			
	Daadab	0.81																			
	Fafi	2.56																			
	Ijara	5.96																			
Lagdera	4.86																				
Dujis	4.78																				
Balambala	39.35	28.45	18.47																		
Daadab	24.31	17	8.73																		
Fafi	14.66	10.97	6.33																		
Ijara	14.62	12.62	9.04																		
Lagdera	49.99	37.22	24.13																		
Dujis	30.12	24.44	15.62																		
ISIOLO	County	43.02	30.81	21.03	<p>Vegetation greenness below normal in both sub-counties with a VCI-1 month showing extreme vegetation deficit in the last four weeks. However, some rains received in November should partially improve the VCI values in December</p> <table border="1"> <thead> <tr> <th>Administrative Unit</th> <th>VCI – 1 Month</th> </tr> </thead> <tbody> <tr> <td>Isiolo</td> <td>5.68</td> </tr> <tr> <td>I. North</td> <td>5.7</td> </tr> <tr> <td>I. South</td> <td>5.66</td> </tr> </tbody> </table>	Administrative Unit	VCI – 1 Month	Isiolo	5.68	I. North	5.7	I. South	5.66								
	Administrative Unit	VCI – 1 Month																			
	Isiolo	5.68																			
I. North	5.7																				
I. South	5.66																				
I. North	43.66	31.21	21.46																		
I. South	42.03	30.2	20.38																		

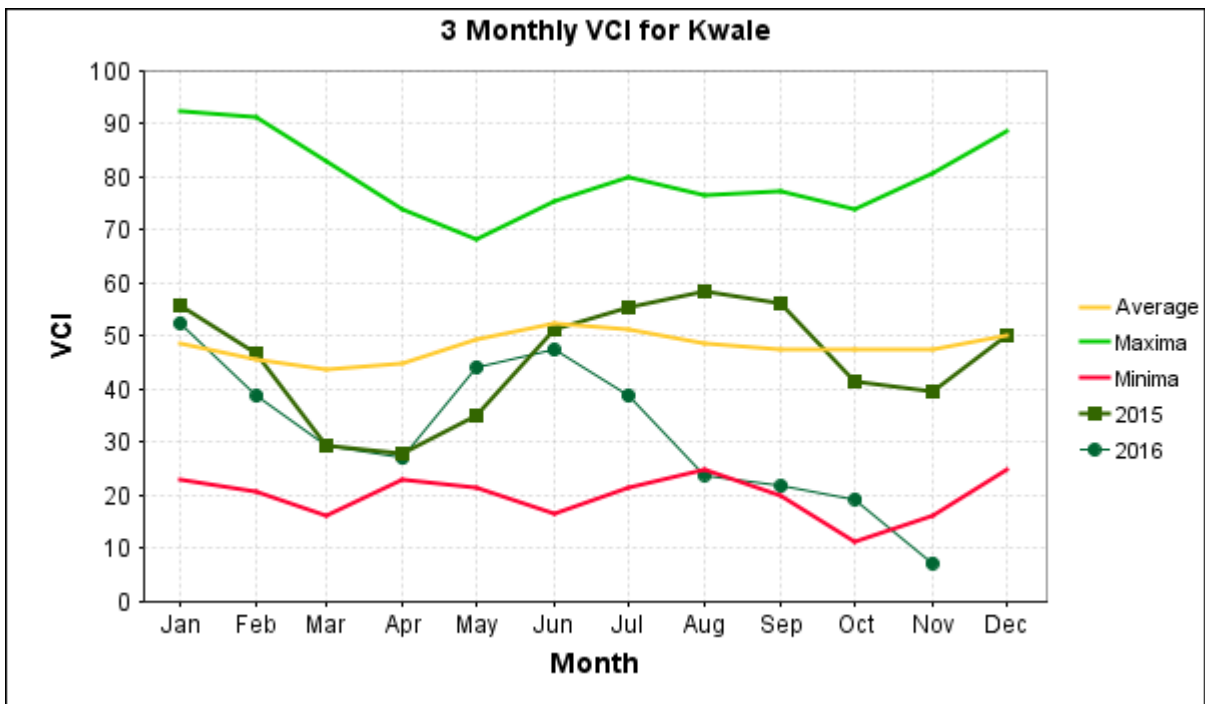
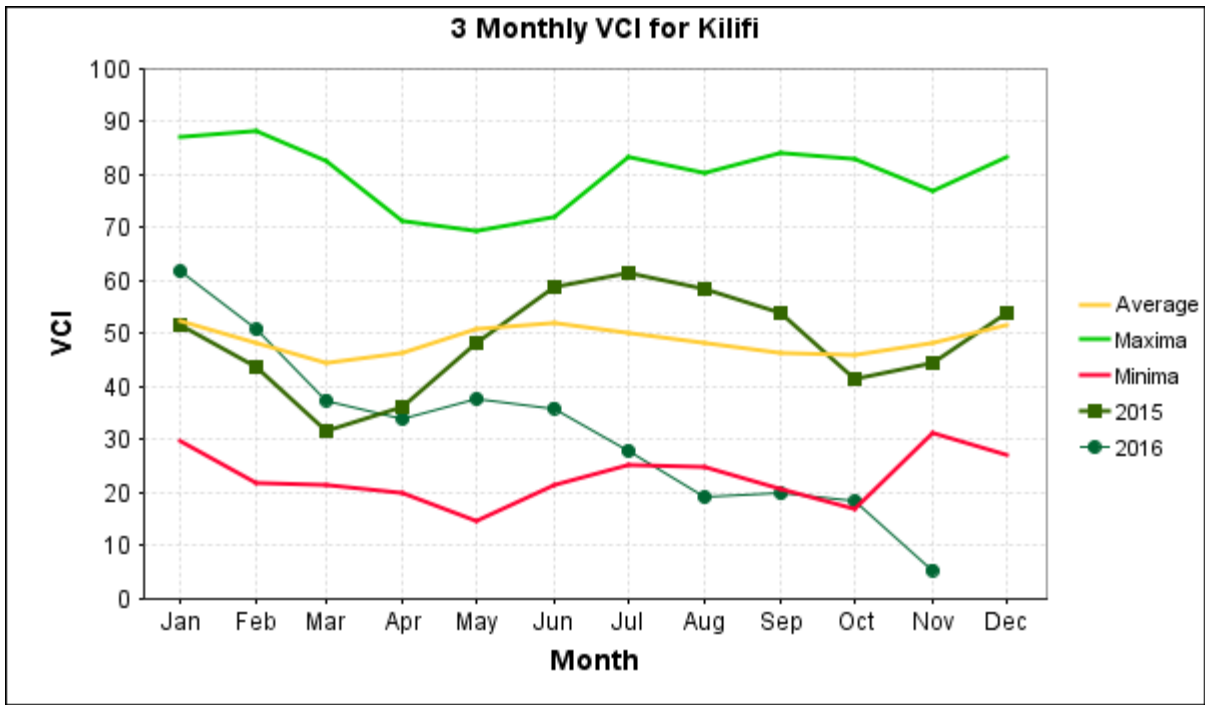
ADMINISTRATIVE UNIT															
COUNTY		VCI-3 as at 31 <sup>st</sup> Oct 2016	VCI-3 as at 14 Nov 2016	VCI-3 as at 28 <sup>st</sup> Nov 2016											
TANA RIVER	County	32.83	26.56	18.19	<p>Although some rains have been received in Bura sub-county, the vegetation greenness is much below normal for the period and will cause a significant drought during the next dry season unless substantial rains are received in December</p> <table border="1"> <thead> <tr> <th>Administrative Unit</th> <th>VCI – 1 Month</th> </tr> </thead> <tbody> <tr> <td>Tana River</td> <td>6.6</td> </tr> <tr> <td>Bura</td> <td>4.99</td> </tr> <tr> <td>Galole</td> <td>8.74</td> </tr> <tr> <td>Garsen</td> <td>6.63</td> </tr> </tbody> </table>	Administrative Unit	VCI – 1 Month	Tana River	6.6	Bura	4.99	Galole	8.74	Garsen	6.63
	Administrative Unit	VCI – 1 Month													
	Tana River	6.6													
	Bura	4.99													
	Galole	8.74													
Garsen	6.63														
Bura	32.12	24.36	16.2												
Galole	37.98	31.73	22.32												
Garsen	30.23	25.2	17.31												
KAJIADO	County	37.21	35.66	29.92	<p>There is a moderate vegetation deficit in three sub-counties. However, some significant rains were received in November and are expected to improve the VCI in December within normal ranges or slightly below normal</p>										
	K. Central	33.23	31.32	26.42											
	K. East	33.99	31.05	23.68											
	K. North	60.58	57.31	56.58											
	K. South	34.82	33.8	25.6											
	K. West	42.25	41.11	37.48											
LAIKIPIA	County	40.12	34.94	28.38	<p>In line with other counties, the onset of the rain season was late and therefore the vegetation greenness is currently quite below normal, with L. North in the severe drought band. However, some good rains received in the third week of November are expected to increase the VCI in December</p>										
	L. East	36.97	31.74	27.63											
	L. North	32.08	26.48	19.32											
	L. West	56.67	52.31	45.71											
THARAKA	County	54.09	42.62	31.95	<p>As above</p>										
	Chuka	62.34	53.11	49.47											
	Maara	62.06	55.52	49.22											
	Tharaka	48.43	34.55	19.83											
W POKOT	County	46.3	40.65	33.56	<p>There has been depressed rainfall with poor distribution, which is determining a negative trend in the vegetation greenness especially in Kacheliba and Sigor sub-counties. This situation will probably cause a drought spell during the next dry season unless more rains are received in December</p>										
	Kacheliba	40.54	33.9	25.34											
	Kapenguria	56.54	50.66	43.28											
	Pokot South	61.78	55.99	52.89											
	Sigor	38.98	35.4	28.87											
EMBU	County	55.35	45.52	36.43	<p>Mbeere North and South are currently experiencing a moderate vegetation deficit but the significant rains received in the last two-three weeks are expected to improve the VCI within normal ranges in December. However, crop production will be sustained only if significant rainfall will continue in December</p>										
	Manyatta	63.49	58.41	56.66											
	Mbeere North	46.49	35.78	23.81											
	Mbeere South	55.39	43.75	31.55											
	Runyenjes	66.14	59.72	60.57											
KITUI	County	41.51	33.49	23.9	<p>The VCI-3month shows moderate deficit across all sub-counties although the significant rains received in the last couple of weeks should increase significantly the vegetation greenness in December. However, crop production will perform sufficiently only if significant rains will be received in December</p>										
	Kitui Central	49.19	43.28	37.84											
	Kitui East	41.96	33.62	25.78											
	Mwingi Central	48.33	35.01	24.58											
	Mwingi North	44.46	32.26	21.33											
	Mwingi West	46.76	38.3	26.99											
	Kitui Rural	35.57	32.6	26.96											
	Kitui South	36.22	31.22	21.47											
	Kitui West	48.36	42.14	33.18											
MAKUENI	County	37.38	33.27	25.93	<p>There is a severe vegetation deficit in Kibwezi East and East and a general below normal situation across all sub-counties except for Kaiti and Mbooni. The good rains received in the last weeks should</p>										
	Kaiti	67.8	58.19	49.11											
	Kibwezi East	28.33	26.48	18.69											

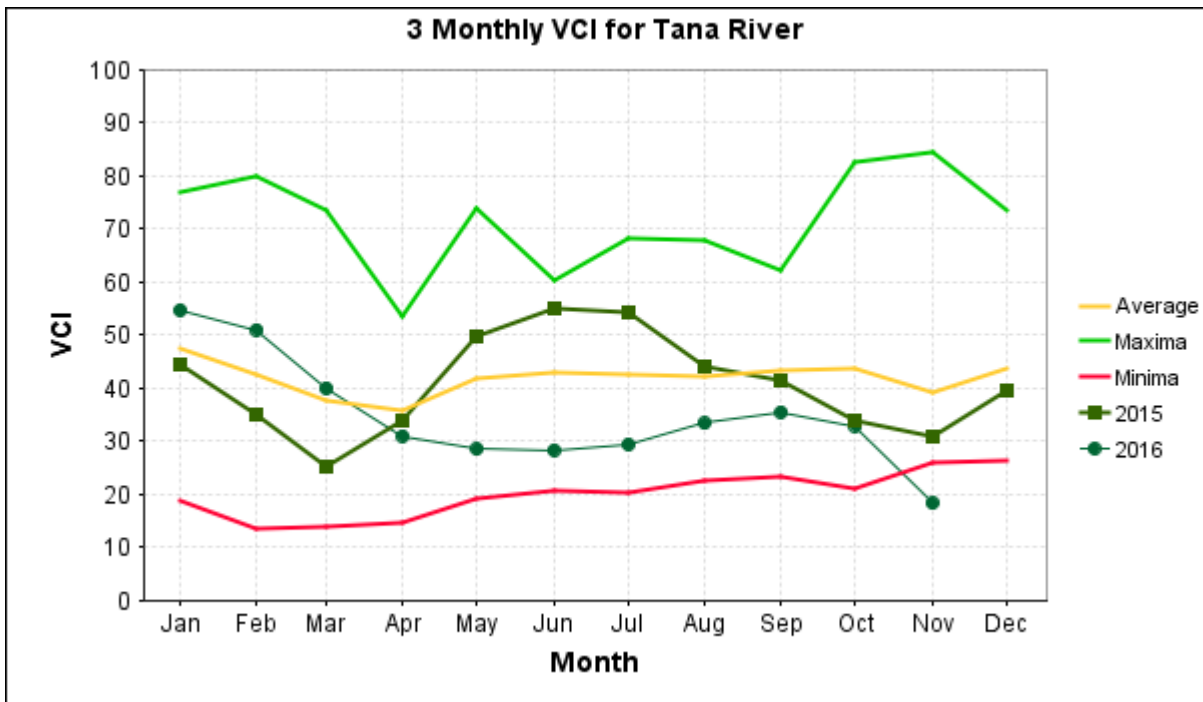
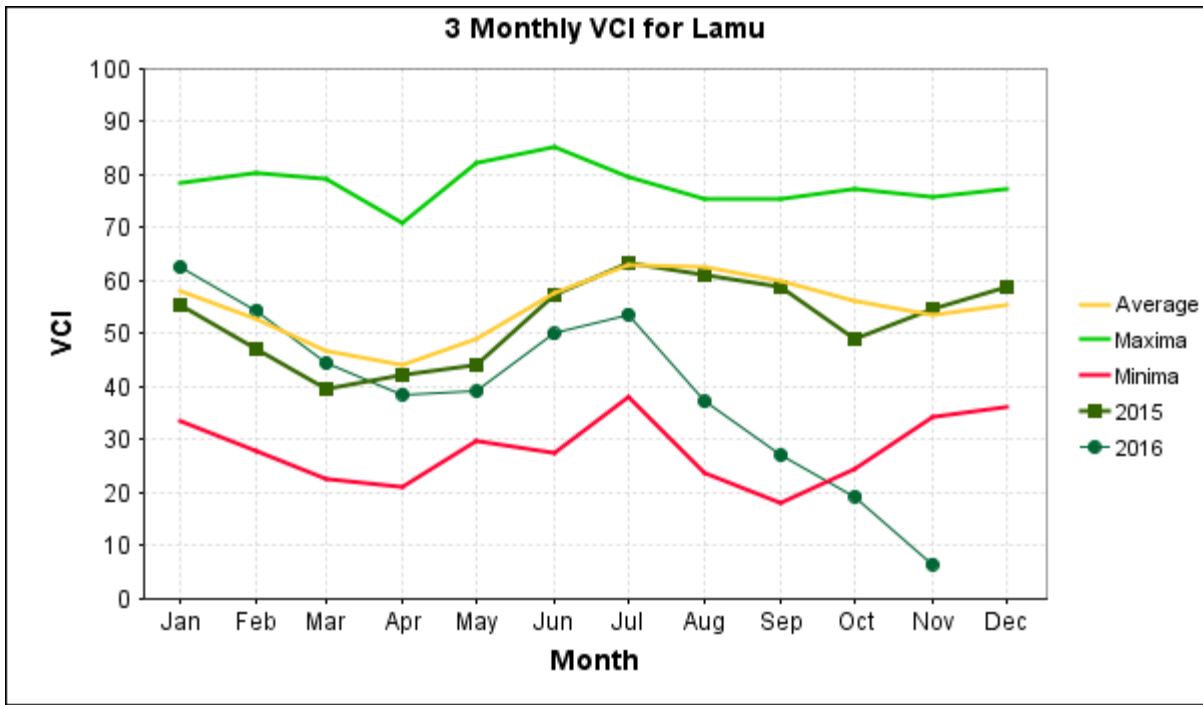
	Kibwezi West	27.8	25.61	19.27	improve the VCI in December but sufficient crop production will be achieved only if rains continue in December
	Kilome	37.99	31.58	25.1	
	Makueni	40.66	35.92	29.79	
	Mbooni	60.65	52.3	42.07	
<b>ADMINISTRATIVE UNIT</b>					
<b>COUNTY</b>		<b>VCI-3 as at 31<sup>st</sup> Oct 16</b>	<b>VCI-3 as at 14 Nov 2016</b>	<b>VCI-3 as at 28<sup>st</sup> Nov 16</b>	
<b>MERU</b>	<b>County</b>	48.85	39.55	31.86	Some moderate deficit experienced in most sub-counties but the good rains received in the last ten days should increase the VCI in December. However, being crops still at the initial stages of growth, they will not perform sufficiently unless significant rains will be received in December
	Buuri	40.28	35.4	32	
	Central Imenti	55.14	48.31	41.21	
	Igembe Central	53.68	40.52	30.32	
	Igembe North	54.81	39.41	27.54	
	Igembe South	57.45	43.69	32.61	
	North Imenti	45.08	36.82	23.48	
	South Imenti	63.71	58.63	53.72	
	Tigania East	34.91	27.36	23.52	
Tigania West	38.83	31.6	21.33		
<b>NYERŪ</b>	<b>County</b>	53.69	49.5	49.05	The vegetation greenness is within normal ranges due to the good rains received in November
	Kieni	51.16	48.11	47.54	
	Mathira	50.09	45.41	45.07	
	Mukurweini	57.39	47.7	50.01	
	Town	50.16	41.92	31.53	
	Othaya	63.48	58.45	60.66	
	Tetu	61.52	57.58	58.3	
<b>KILIFI</b>	<b>County</b>	18.25	13.22	5.27	The rains received so far are very poor and all sub-counties, except Kilifi South, are now in the extreme vegetation deficit category, with negative values of VCI (below 0). The VCI-1 month shows staggering deficits much below 0 (with 0 being the lowest recorded vegetation deficit before this season). The next dry season will further exacerbate the already critical situation.
	Ganze	13.95	9.81	2.8	
	Kaloleni	9.51	4.67	-6.57	
	Magarini	18.92	13.99	7.53	
	Malindi	14.89	8.83	-1.17	
	Kilifi-North	21.02	14.26	-0.08	
	Rabai	33.88	24.37	7.13	
	Kilifi-South	45.49	39.2	25.22	
	<b>Administrative Unit</b>	<b>VCI – 1 Month</b>			
	Kilifi	-6.56			
	Ganze	-7.24			
	Kaloleni	-21.93			
	Magarini	-2.15			
	Malindi	-15.77			
	Kilifi-North	-21.34			
	Rabai	-20.88			
	Kilifi-South	-6.56			
<b>KWALE</b>	<b>County</b>	19.14	15.36	7.07	In line with Kilifi, also Kwale County is experiencing the worst drought situation ever recorded for this period. The crop season is already failed and the few rains received will not allow to recover from the drought spell, especially in Kinango
	Kinango	13.57	10.28	3.52	
	Lungalunga	19.86	16.11	7.15	
	Matuga	34.65	29.28	16.02	
	Msambweni	41.29	35.8	25.38	
		<b>Administrative Unit</b>	<b>VCI – 1 Month</b>		
	Kwale	-5.59			
	Kinango	-5.93			
	Lungalunga	-7.01			
	Matuga	-5.5			
	Msambweni	4.87			
<b>LAMU</b>	<b>County</b>	19.14	14.13	6.37	Also in Lamu County the extreme vegetation deficit is in line with the one experienced in Kilifi and Kwale
	Lamu East	30.51	23.88	15.36	

	Lamu West	12.5	8.43	1.12	<table border="1"> <thead> <tr> <th>Administrative Unit</th> <th>VCI – 1 Month</th> </tr> </thead> <tbody> <tr> <td>Lamu</td> <td>-3.82</td> </tr> <tr> <td>Lamu East</td> <td>3.92</td> </tr> <tr> <td>Lamu West</td> <td>-8.34</td> </tr> </tbody> </table>	Administrative Unit	VCI – 1 Month	Lamu	-3.82	Lamu East	3.92	Lamu West	-8.34
Administrative Unit	VCI – 1 Month												
Lamu	-3.82												
Lamu East	3.92												
Lamu West	-8.34												
TAITA T.	County	35.88	29.77	20.92	The vegetation deficit is particularly severe in Mwatate and Voi sub-counties. Some rains received but distribution poor. Crops planted only in areas receiving some rains but they will probably fail unless significant rains are received in December								
	Mwatate	32.15	24.83	17.04									
	Taveta	54.48	46.18	34.01									
	Voi	28.47	23.72	16.17									
	Wundanyi	43.85	36.46	25.41									
NAROK	County	30.22	33.25	34.63	Slight vegetation deficit in Narok east and south but good rains received which should increase the VCI in December within normal ranges								
	Narok-East	34.57	33.54	32.56									
	EmuruaDikirr	32.42	40.39	46.33									
	Kilgoris	20.25	30.8	37.31									
	Narok-North	36.02	36.33	40.26									
	Narok-South	31.54	30.5	30.67									
	Narok-West	29.02	34.91	34.39									

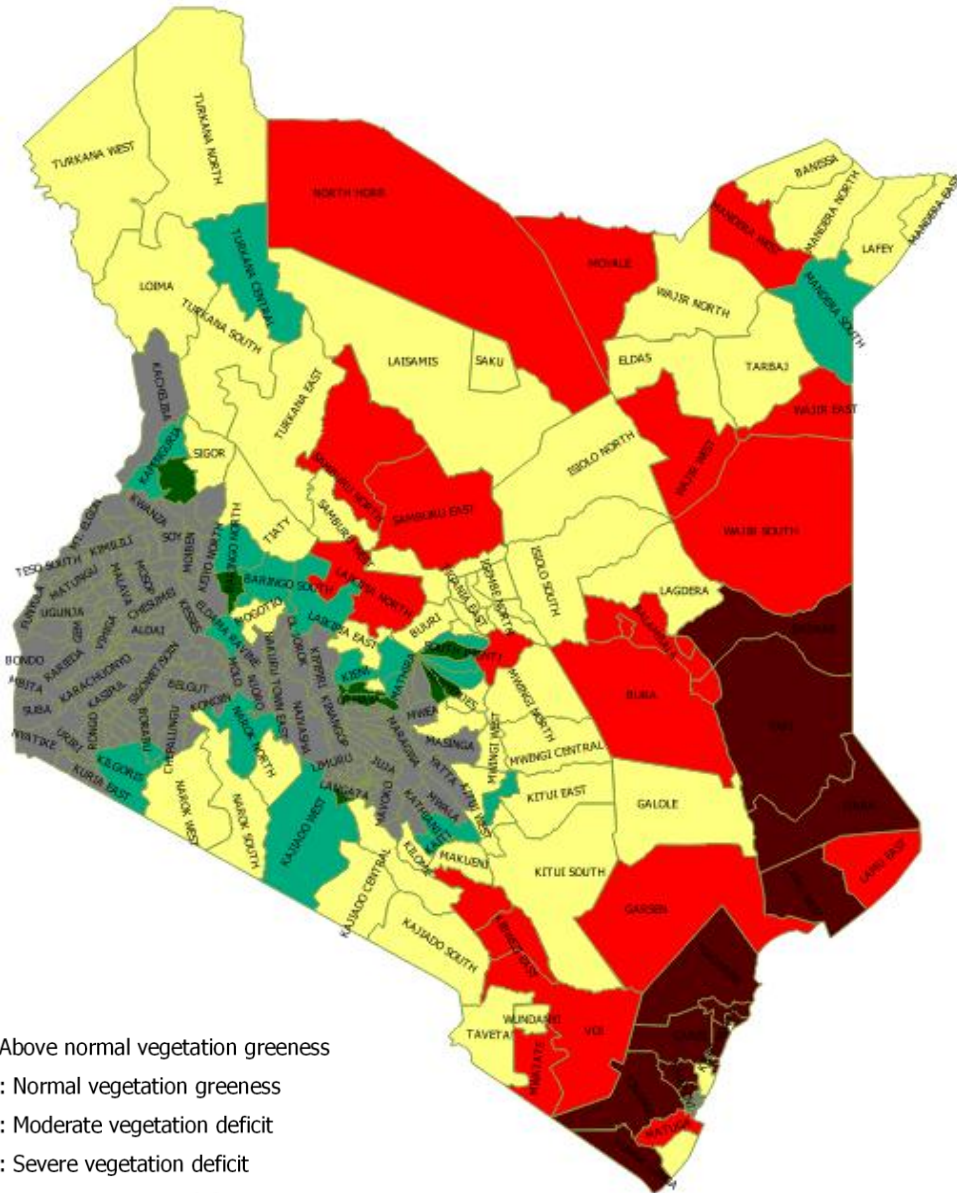
**ANNEX 1: Counties with below historical minimum VCI (3-month) as at end of November 2016**







**ANNEX 2: Vegetation Condition Index (3-Month) as at November 28, 2016**



- Legend**
- >=50 : Above normal vegetation greenness
  - 35 - 50 : Normal vegetation greenness
  - 20 - 35 : Moderate vegetation deficit
  - 10 - 20 : Severe vegetation deficit
  - <10 : Extreme vegetation deficit
  - No Data



Monitoring of the Vegetation Condition Index is supported by the European Union through the ASAL Drought Contingency Fund (DCF) project implemented under National Drought Management Authority.

*Disclaimer: The views expressed in this document do not in any way reflect the opinion of the European Union.*