



REPUBLIC OF KENYA

MINISTRY OF DEVOLUTION AND PLANNING

WORKING TOGETHER TO END DROUGHT EMERGENCIES IN KENYA BY 2022

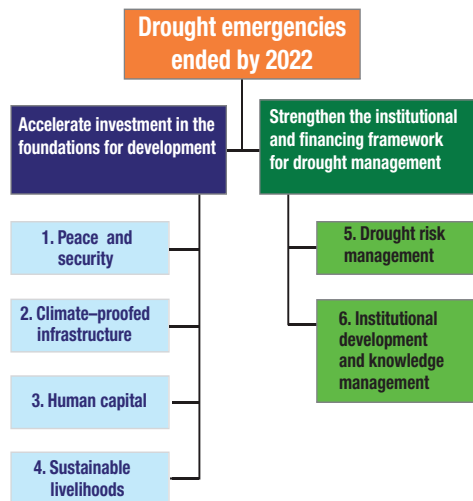
What is the EDE?

The Ending Drought Emergencies Initiative (EDE) is a new approach that recognises that droughts cause emergencies because the foundations needed to support sustainable livelihoods in drought-prone areas – principally security, infrastructure and human capital (education, health and nutrition) – are often weak. This weakness is due to historical imbalances in investment, which are recognised by the Constitution and one of the drivers of devolution. The EDE initiative will accelerate investment in these development foundations as well as strengthen the institutions responsible for managing drought risks.

The EDE is part of the second Kenya Vision 2030 Medium Term Plan, 2013-17 (chapter 3.8). It is being implemented through a Common Programme Framework that will ensure stronger alignment and coordination of investment and activity between the National Government, the County Governments and Development Partners. It is also aligned with the 2013 Kenya External Resources Policy, and specifically its requirements for country ownership and leadership, mutual accountability, managing for development results, and stronger alignment and coordination.

The EDE framework brings together interventions over time, ensuring that immediate response to hazards contributes to sustainable development. The Common

Programme Framework has two objectives and six pillars which will help achieve the overall goal, as follows:



Each pillar has links and synergies with the others, thus careful coordination is required between them. Pillar groups chaired by the relevant Government Ministry and co-chaired by a development partner, have defined strategic frameworks and prioritised interventions that will have a transformational impact on ending drought emergencies. A National Steering Committee oversees the pillar groups and is supported by other structures.

(See diagram overleaf)

EDE INSTITUTIONAL FRAMEWORK

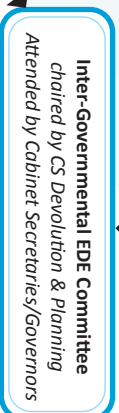
Public accountability mechanisms

Parliamentary oversight

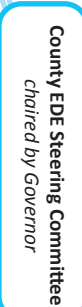
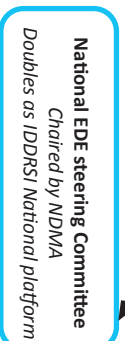
National Treasury

County

Communities



Political level



Implementation and coordination

